

# Pre-Application Workshop

---

June 8, 2026

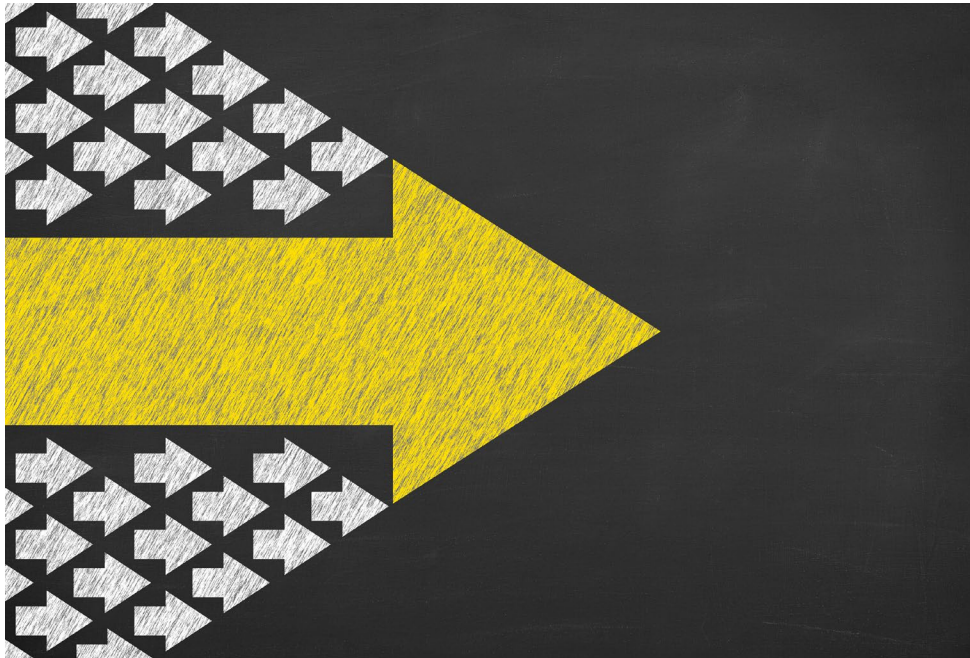
Amanda, Heather, Matt, Melissa, Sindie

Grants and Community Resources Department



Missoula COUNTY

# Meeting Objectives



- ✓ Provide information on CDBG funding opportunities available to Missoula County
- ✓ Outline the roles and responsibilities of Missoula County and selected community partners
- ✓ Provide an overview of the pre-application process and how to submit an application in our Grant Portal

# Pre-Application Process Overview

- ✓ Helps GCR staff identify potential community partners and eligible projects
- ✓ Applications will be collected, reviewed, and scored by GCR staff
- ✓ One application per funding category will be recommended to the Board of County Commissioners

## Tentative Timeline

Pre-application release	June 1, 2026
Pre-application Workshop	June 8, 2026 @ 2 p.m.
Pre-application Deadline	June 22, 2026 @ 5 p.m.
Application Review & Recommendations to the BCC	June 23 – July 16, 2026
CDBG Application Drafting (MC lead with assistance from selected community partner)	August – October
Submit CDBG grant application	CDBG ED – Rolling deadline CDBG Housing – September CDBG Planning – Fall 2026 (tentatively) CDBG Facilities – Fall 2026

# Community Development Block Grant (CDBG)

## Montana Department of Commerce (MDOC)



Federal block grant program directed by the US Department of Housing and Urban Development (HUD) for the purpose of developing viable communities by providing decent housing, a suitable living environment, and expanding economic opportunities for low- and moderate-income individuals (LMI)

Missoula County is a non-entitlement community and applies directly to MDOC for funding.

# CDBG

## Categories



Only one active award is allowed under each category at a time

1. Affordable Housing Development and Rehabilitation Grants
2. Housing Stabilization Program
3. Economic Development
4. Public and Community Facilities
5. Planning

\*Category we are not eligible to apply for in 2026

# CDBG

## National Objective



CDBG projects must meet HUD's national objective to benefit low- to moderate-income persons.

Generally, at least 51% of project beneficiaries must qualify as low- to moderate-income based on Area Median Income.

# CDBG

## Affordable Housing Development and Rehabilitation Grants

- Funds new construction or rehabilitation of multi-family housing, multiple single-family housing, temporary housing facilities, and neighborhood revitalization
- Award details
  - Up to \$600,000
  - No match is required but leveraging other funding is highly encouraged
  - Due September 15



# CDBG

## Economic Development (ED)

- Designed to stimulate economic development activity by assisting organizations to create or retain jobs for LMI persons primarily through loans
- Award details
  - Up to \$525,000 (\$35k per LMI job created or retained)
  - 1:1 match
  - Applications accepted on an ongoing basis



# CDBG

## Planning

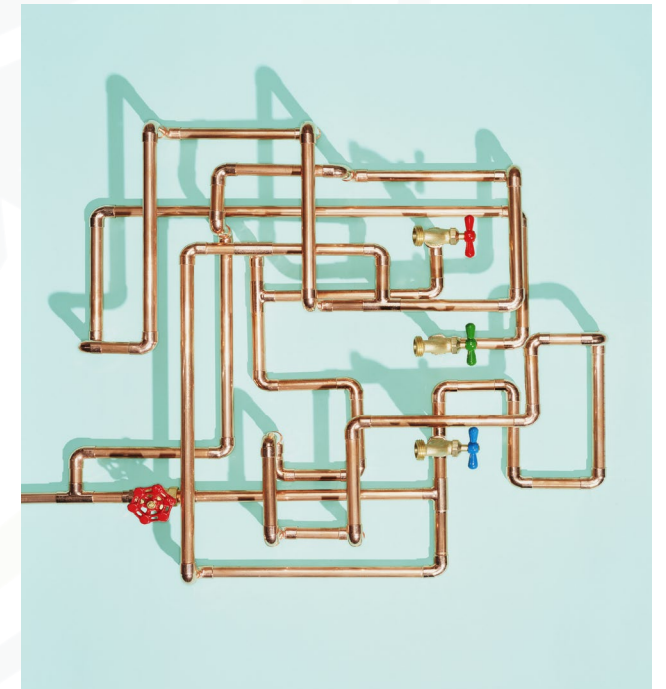
- Planning grants may be used for the preparation of plans, studies, trainings or research
- Award details
  - Up to \$50,000
  - 25% match
  - In this past funding cycle, the state accepted applications in October and January



# CDBG

## Public and Community Facilities

- Funds construction or rehabilitation of public infrastructure and community facilities that primarily benefit LMI individuals
- Eligible subrecipients: for-profit, non-profit or quasi-governmental entities
- Award details
  - Up to \$750,000
  - 25% match
  - Due September or October



# Missoula County Priorities

Due to the competitiveness of CDBG grants and the number of awards the county can receive, the Board of County Commissioners has established the following program priorities:

- Located outside the City of Missoula limits but within the geographic boundaries of Missoula County;
- Demonstrate a significant degree of leverage through other investments, including public and private sources; and
- If within city limits, demonstrates a meaningful financial contribution from the City of Missoula

# CDBG Rules & Regulations

## Uniform Relocation Act

- Establishes relocation assistance requirements if a federally funded project results in the acquisition of real property and displaces persons from their homes, businesses, or farms

## Section 104d

- Minimizes displacement and provides relocation assistance to lower-income individuals; if lower income housing is demolished or converted to a different use, housing must be replaced on a one-for-one basis with comparable units

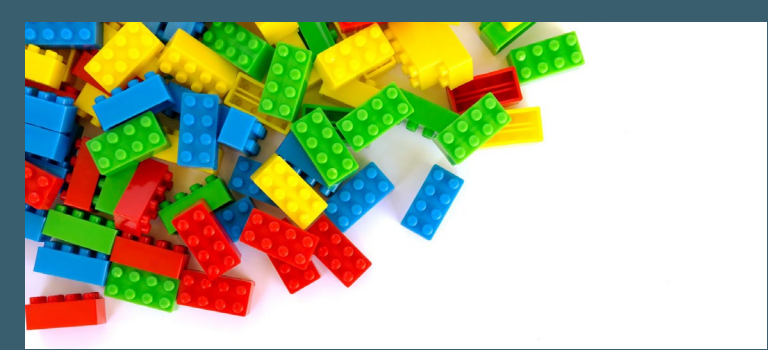
## Choice Limiting Actions

- Prior to obtaining environmental clearance, no activity may be undertaken by the grantee or their partners that reduces or eliminates a grantee's opportunity to choose project alternatives that would avoid or reduce environmental impacts

## Environmental Review

- A process required for all HUD-assisted projects to ensure that the proposed project does not negatively impact the surrounding environment and that the property itself will not have an adverse environmental or health effect on end users





# CDBG Rules & Regulations

## Build America Buy America (BABA)

- Requires all iron, steel, manufactured products, and construction materials used in infrastructure projects be produced in the US (does not apply to HSP)

## Disadvantaged Business Enterprise (DBE)

- Required to take affirmative steps to assure that DBEs are utilized when possible

## SAM Registration

- Used to determine if entities have been either suspended or debarred

## Procurement

- The most restrictive regulation applies based on service needed and spending threshold. Can be directed by federal, state or local policy.

## Intended for gap funding

- These programs cover funding gaps and are not intended to fully fund projects

# Roles & Responsibilities

## Missoula County

- Lead grant writing/editing and submitting grant application to MDOC
- Grantee of MDOC
- Environmental Review
- Monitoring/ensuring compliance
- Manages the CDBG award

## Partner

- Co-write grant application – specifically around project scope and design
- Subrecipient of Missoula County
- Manages the project including, but not limited to, procuring contracted services, meeting grant requirements, labor compliance, implementation

# Pre-Application Tips & Tricks

Applications will be submitted via Missoula County's Grant Portal

Logon

Email Address\*

Password\*

[Log On](#) [Create New Account](#)

[Forgot your Password?](#)

**Welcome to the Missoula County Grant Portal.**

Click [here](#) to preview current grant opportunities without logging in or creating an account.

**New Users:** Please click on "Create New Account" to complete the registration process and create your logon credentials.


**Existing Users:** Please enter your credentials and log in. If you forgot your password, please use the "Forgot your Password?" link to the left to reset your password.

**Not Sure?** If you think that you or someone at your organization has already registered in the system, do not create a new account. Please contact us at [grants@missoulacounty.us](mailto:grants@missoulacounty.us) to receive your username.

You can find in-depth tutorials on using the application portal, [here](#).

Click on the "Apply" button at the top of the page

Missoula County


 [Home](#) [APPLY](#) [ORGANIZATION HISTORY](#)

Select Language

Powered by [Google Translate](#)

Applicant Dashboard


Select a CDBG Funding Category and choose to Apply or Preview the application

 **Community Development Block Grant**


2026 CDBG Planning Pre-Application

**CDBG Planning funding can be used to support eligible planning projects on behalf of special purpose districts, unincorporated areas, public school districts, non-profit or for-profit organizations.** In anticipation of a fall 2026 application deadline, pre-applications are now being accepted by Missoula County to identify a partnering entity and/or potential subrecipient of CDBG funding.

See More

 Closes 06/22/2026

[Preview](#) [Apply](#)


 **Community Development Block Grant**

2026 CDBG Housing Pre-Application


**CDBG Housing funding can be used to preserve and develop affordable housing projects.** In anticipation of a fall 2026 application deadline, pre-applications are now being accepted by Missoula County to identify a partnering entity and/or potential subrecipient of CDBG funding.

For more information - including eligibility, process, and timeline - please refer to [here](#).

See More

 Closes 06/22/2026


[Preview](#) [Apply](#)

 **Community Development Block Grant**


2026 CDBG Economic Development Pre-Application

**CDBG Economic Development funding can be used to support economic development activities that create or retain jobs for low- to moderate-income (LMI) individuals.** In anticipation of a fall 2026 application deadline, pre-applications are now being accepted by Missoula County to identify a partnering entity and/or potential subrecipient of CDBG funding.

See More

 Closes 06/22/2026


[Preview](#) [Apply](#)

 **Community Development Block Grant**

2026 CDBG Facilities Pre-Application

**CDBG Facilities funding can be used to support public infrastructure or community facility projects.** In anticipation of a fall 2026 application deadline, pre-applications are now being accepted by Missoula County to identify a partnering entity and/or potential subrecipient of CDBG funding.

See More

 Closes 06/22/2026

[Preview](#) [Apply](#)

Applicant Dashboard

# Pre- Application

## Tips & Tricks

- ✓ If you aren't sure which application is most relevant to your project, contact Grants and Community Resources staff for guidance
- ✓ Start the application in a Word document and copy and paste your responses into the grant portal
- ✓ The system automatically saves your application, but it is highly recommended to save your work as you go
- ✓ There is a “hard stop” question in the application. If you do not meet the basic HUD eligibility, you will not be able to proceed with the application

### HUD Eligibility\*

Does the proposed project benefit at least 51% low- to moderate-income (LMI) persons? (See H [https://commerce.mt.gov/\\_shared/comdev/CDBG/LMIHandbookJuly2020.pdf](https://commerce.mt.gov/_shared/comdev/CDBG/LMIHandbookJuly2020.pdf))

- Yes
- Unsure
- No



# Questions?

**Connect with us to learn more!**

[grants@missoulacounty.us](mailto:grants@missoulacounty.us)

Missoula.co/gcr



**Missoula c o u n t y**

